

## miniCAD7 QuickStart Tutorial

### Stage: 4

### Plot the Job

**Aim:** Plot the job to both printer / plotter and DXF file.

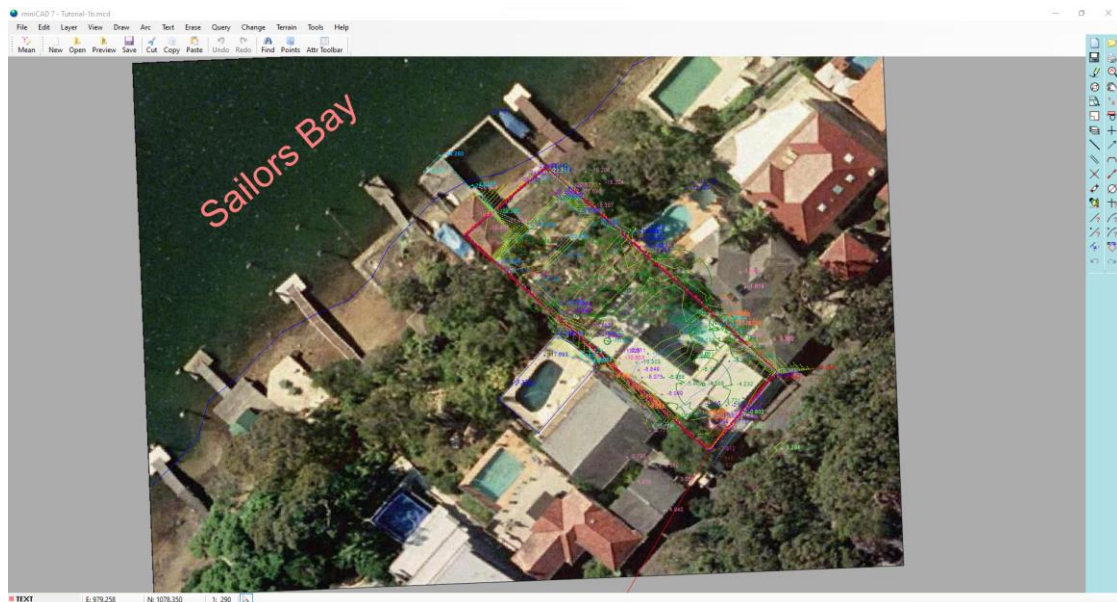


Figure 1 - The finished product

### Plotting and export to DXF

We wish to produce a final paper plan. miniCAD7 will plot directly to the printer or plotter. (however, if you wish you may use a third party drafting packages such as AutoCAD).

You can also plot to multiple sheets, using variable title block text such as sheet headings, dates, and page numbers.

- Open the job Tutorial-1b.mcd. Before we start, open the layer dialogue, select the layer PLAN at the left and set the PLAN layer's Annotation field to Yes. Then. Make sure all other layers Annotation fields are set to No. Hit CTRL-A to select all the layers on the left and then CTRL Left click the mouse on the PLAN layer to deselect it, Set the Annotation field to No. Hit Ok to close the Layer dialogue.
- Zoom out a fair way to make the area to plot will fit in a small central part of the screen.
- Select File>>Plot Window.
- The title block should already be selected as a4\_LandscapeWithGraphic.ttl
- The scale should already be selected as 400.

- The last 2 settings have come from the Job Settings entered in Stage 1 of this tutorial.
- Place the cursor in the Rotation field and snap to the rear boundary at the western end.
- Place the cursor in the East field and click on the screen where you want the bottom left corner of the title block to be located. See figure below for more information.
- Ensure that in Destination, your Output is set to Print Preview and Colour are selected.
- Left click on the blue cog at the bottom of the Plot Window dialogue box and select Set North Point. Click on the screen to place the North Point in a similar location as shown below.

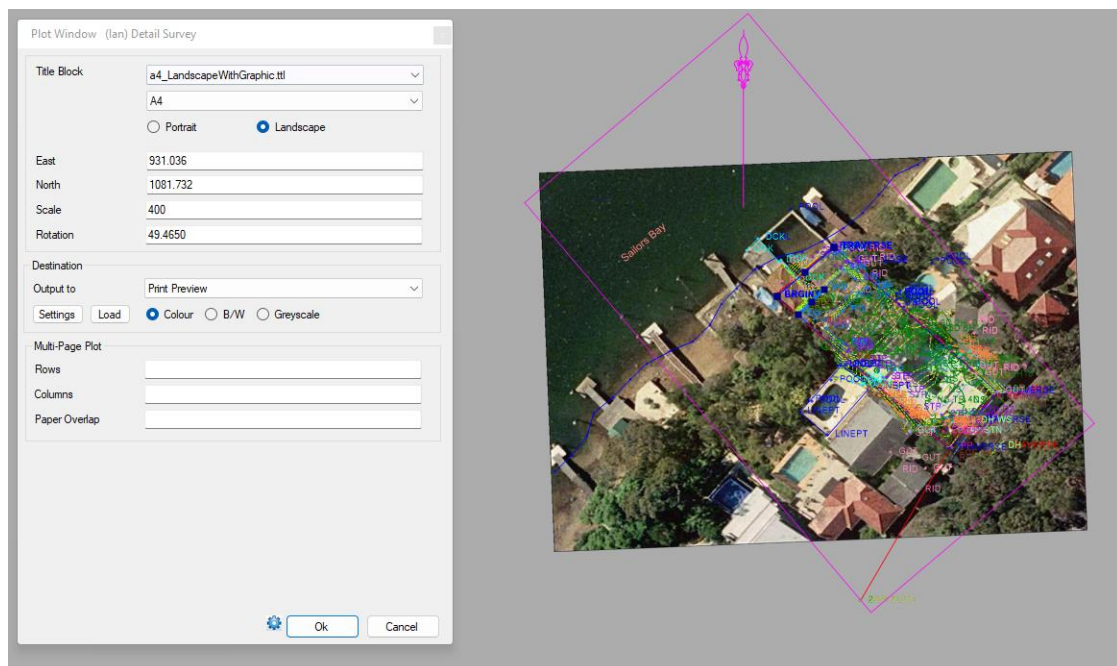


Figure 2 - Plot Window settings

- Select the SETTINGS button on the dialogue and then ensure that your Plot settings match those in the following figures. Plot Settings allow you to customize how your plot looks. You can save multiple different settings and simply select the one you want when you are about to plot.

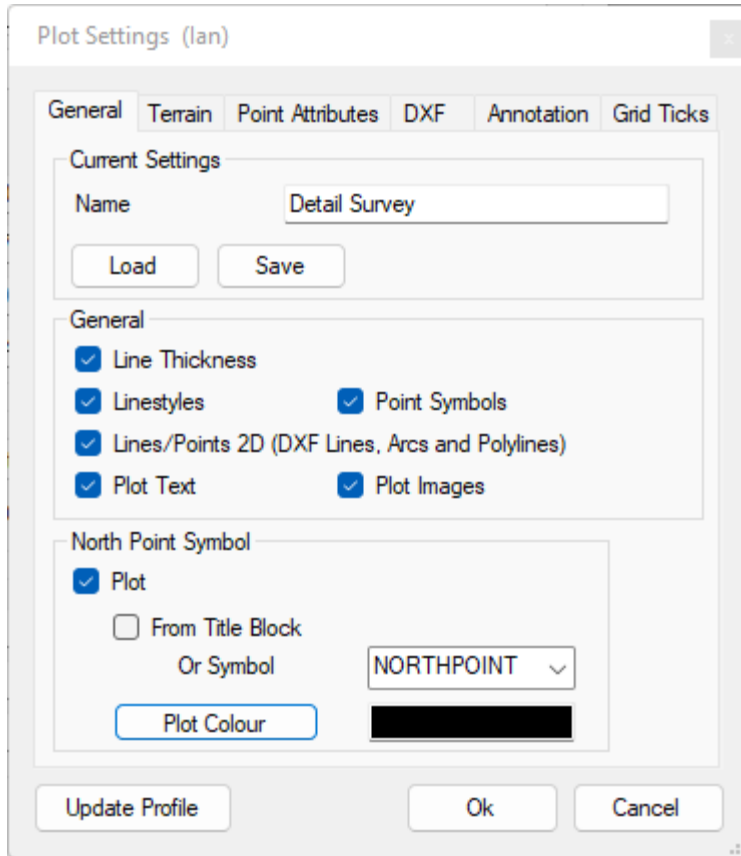


Figure 3 - Plot Settings (General Tab)

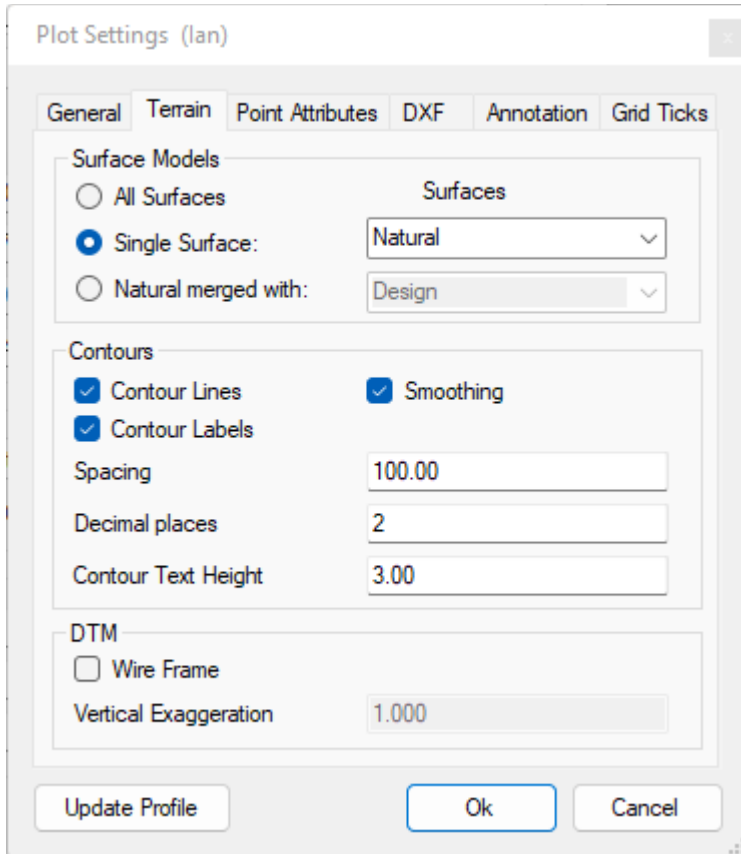


Figure 4 - Plot Settings (Terrain)

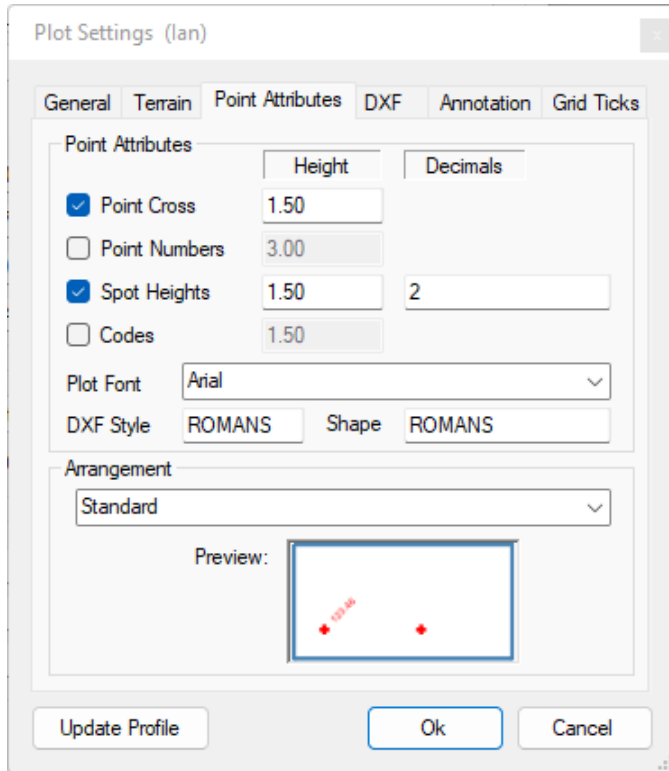


Figure 5 - Plot Settings (Point Attributes)

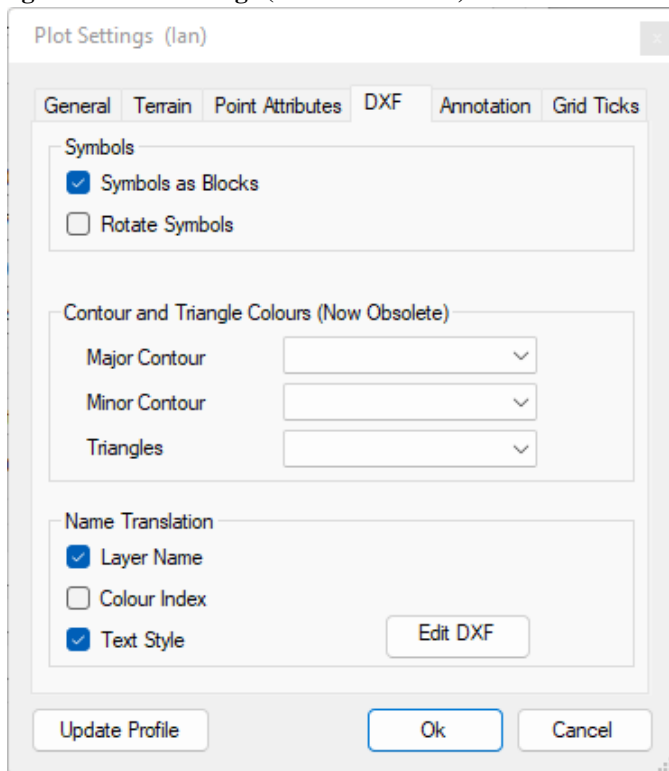


Figure 6 - Plot Settings (DXF)

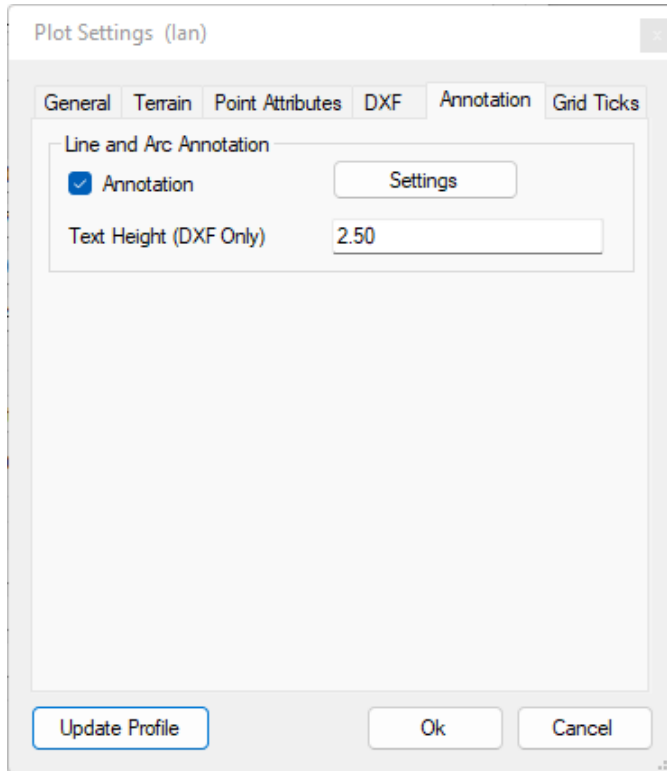


Figure 7 - Plot Settings (Annotation)

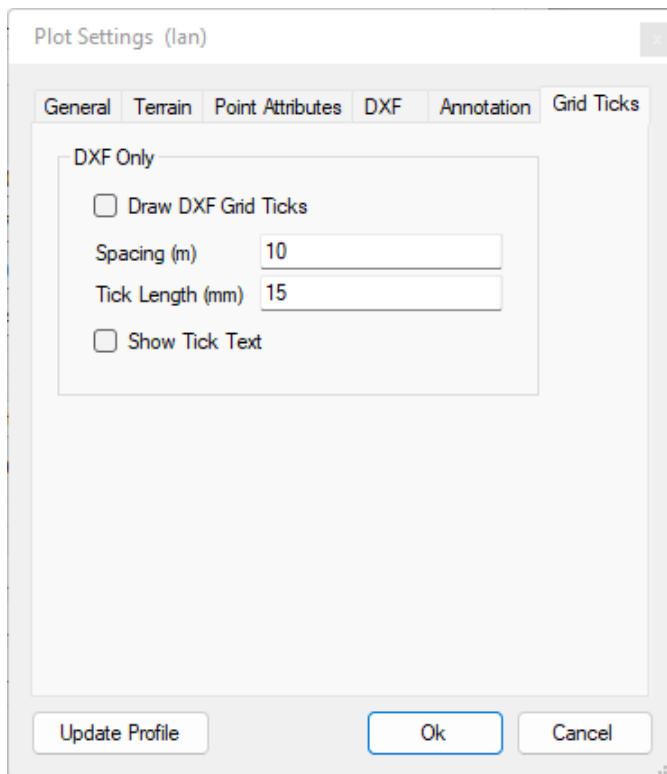
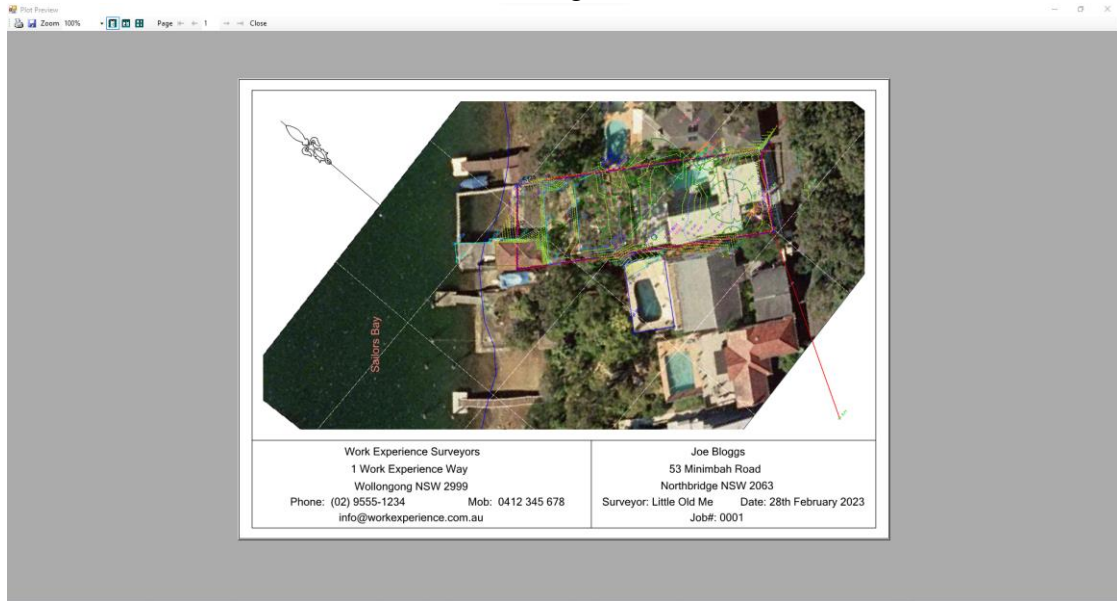


Figure 8 - Plot Settings (Grid Ticks)

- Select the OK button to return to the Plot Window dialogue.

**Note:** Smooth contours and annotation are not displayed on the printer version only the DXF file.

Hit the Ok button on the Plot Window dialogue. You should see this:

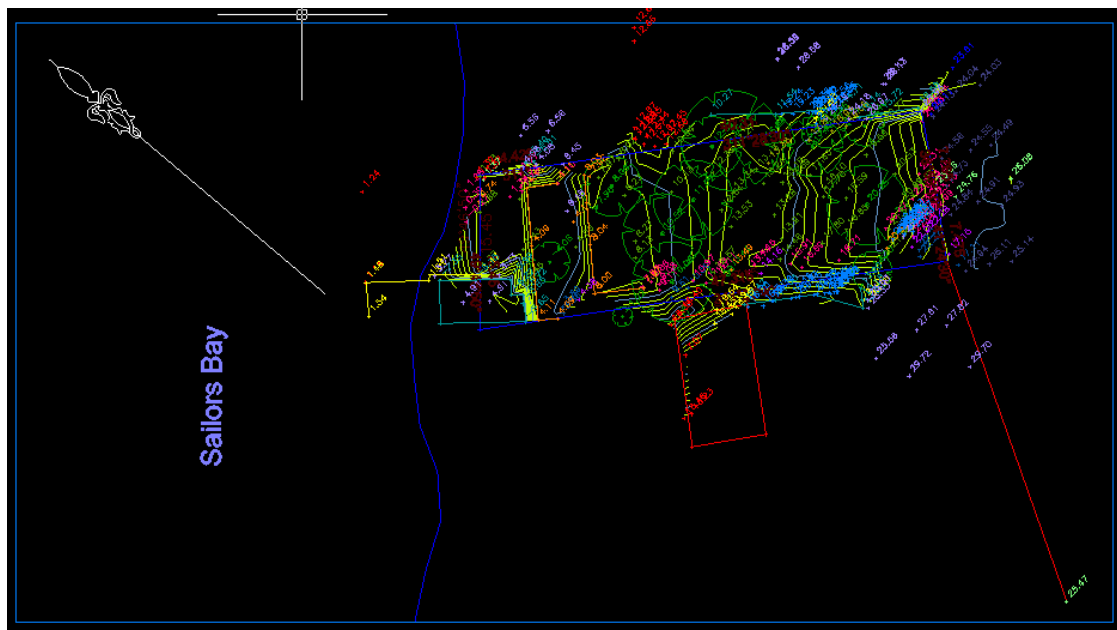


**Figure 9 - Plot Window**

To print the preview, select the Printer icon at the top left of the screen or to send to a DXF file select the Disk icon immediately to the right of the Printer icon.

When plotting a DXF file the filename that is created is displayed in the message bar at the bottom of the screen. (and the message log). If multiple sheets are selected, then you will need to open the message box to get the full list of filenames created.

The DXF file plot is shown, opened in AUTOCAD, below. Note that if you send the job to AutoCAD, the titleblock is not plotted. This is because your titleblocks are normally kept in AutoCAD format and it is better to use these.



**Figure 11 – The miniCAD plot in AutoCAD LT**

Congratulations on completing this tutorial. By now you will have a feel as to how easy miniCAD7 is to use. You are encouraged to explore the extensive help files associated with the program and found online. Should you have further queries, don't hesitate to contact us directly.

We hope you have enjoyed your miniCAD taster! You should have a good grounding now, in the use of surveying CAD software.

Email: [info@mapsoft.com.au](mailto:info@mapsoft.com.au)

Website: [www.mapsoft.com.au](http://www.mapsoft.com.au)